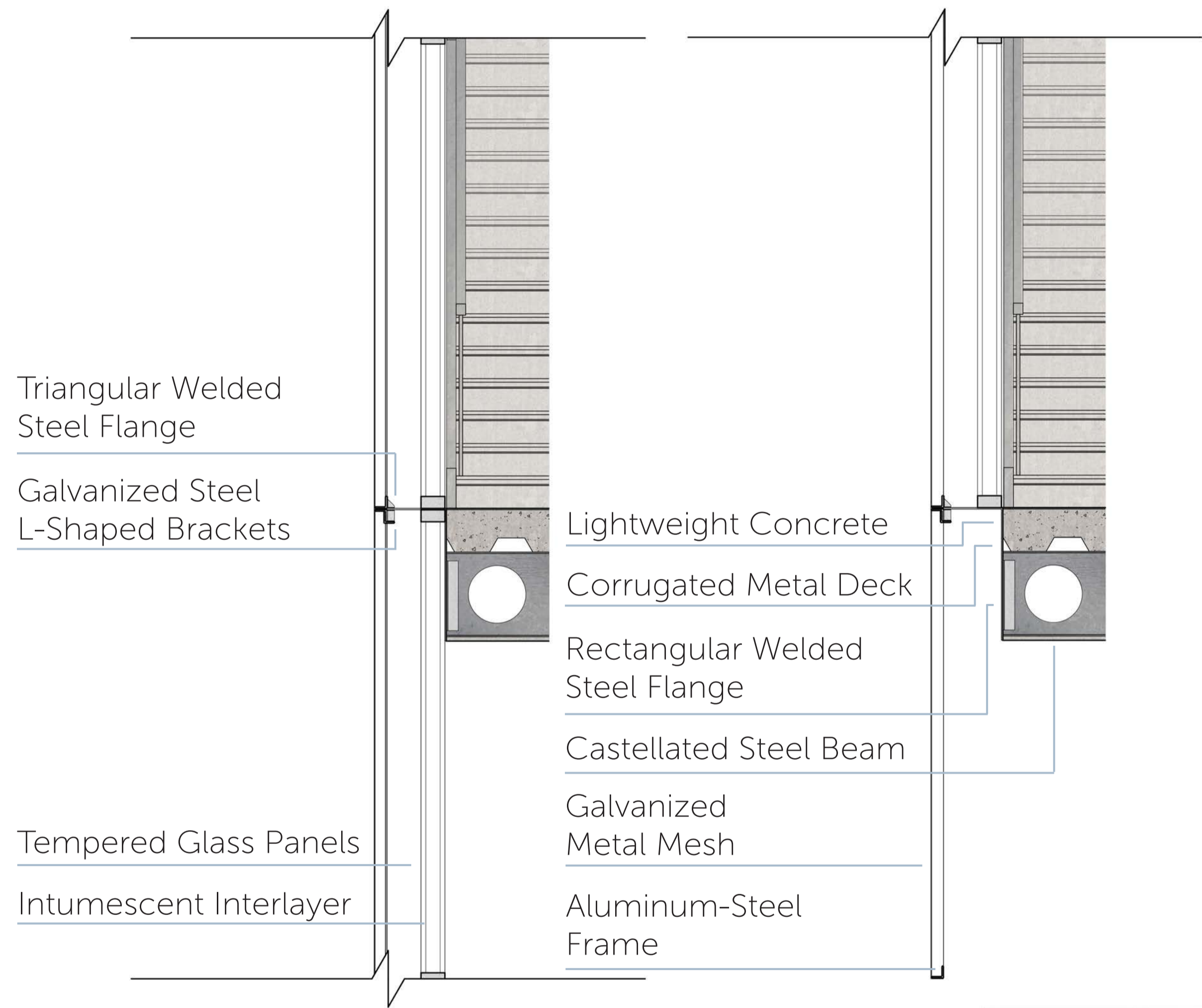


WIRE|FRAMED  
Stella Murray  
ARCH 499A | Fall | "Urban Analysis"  
Simone Bove, David Sabatello



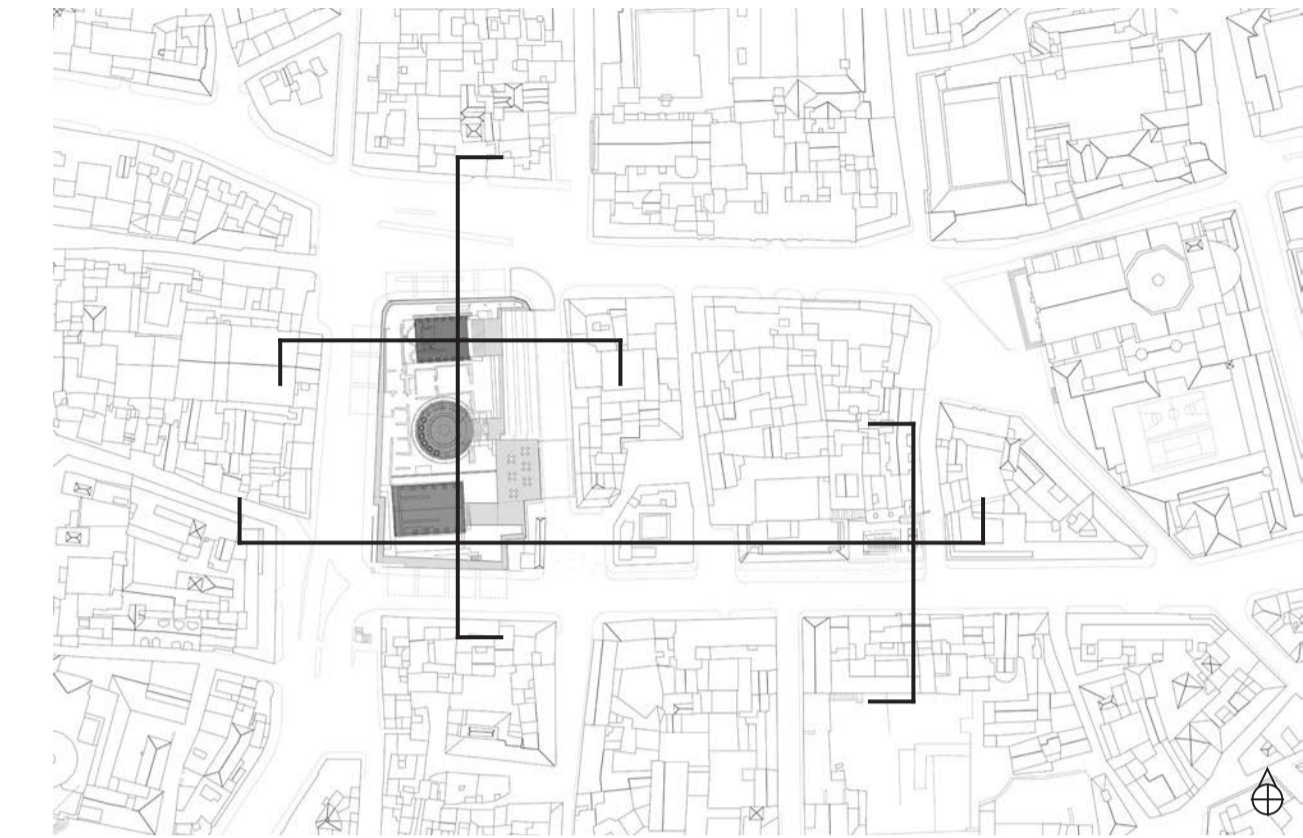
**WIRE|FRAMED**



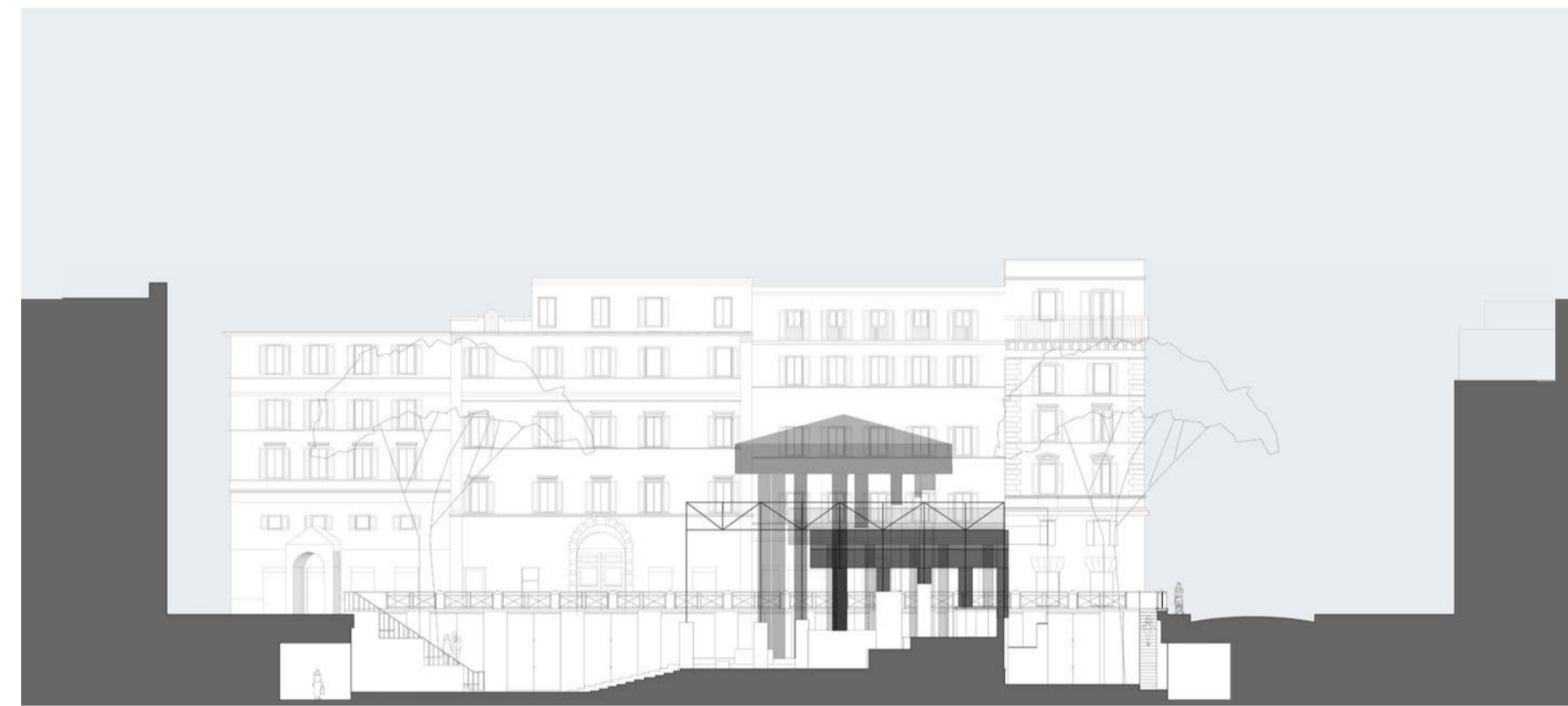
Wall Section | Scale 1:20



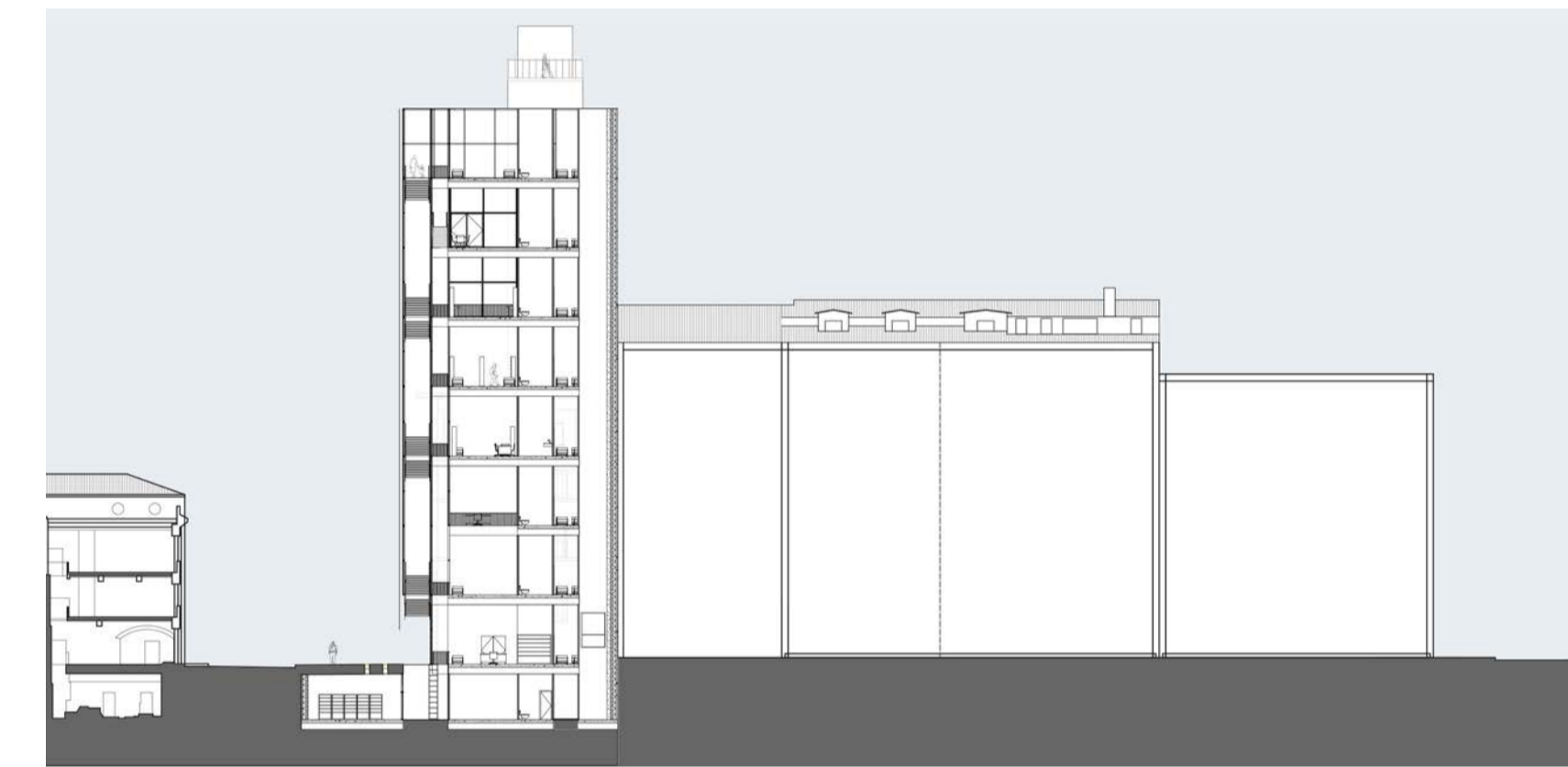
East Transverse Section | Largo di Torre Argentina



Key Plan



South Longitudinal Section | Largo di Torre Argentina



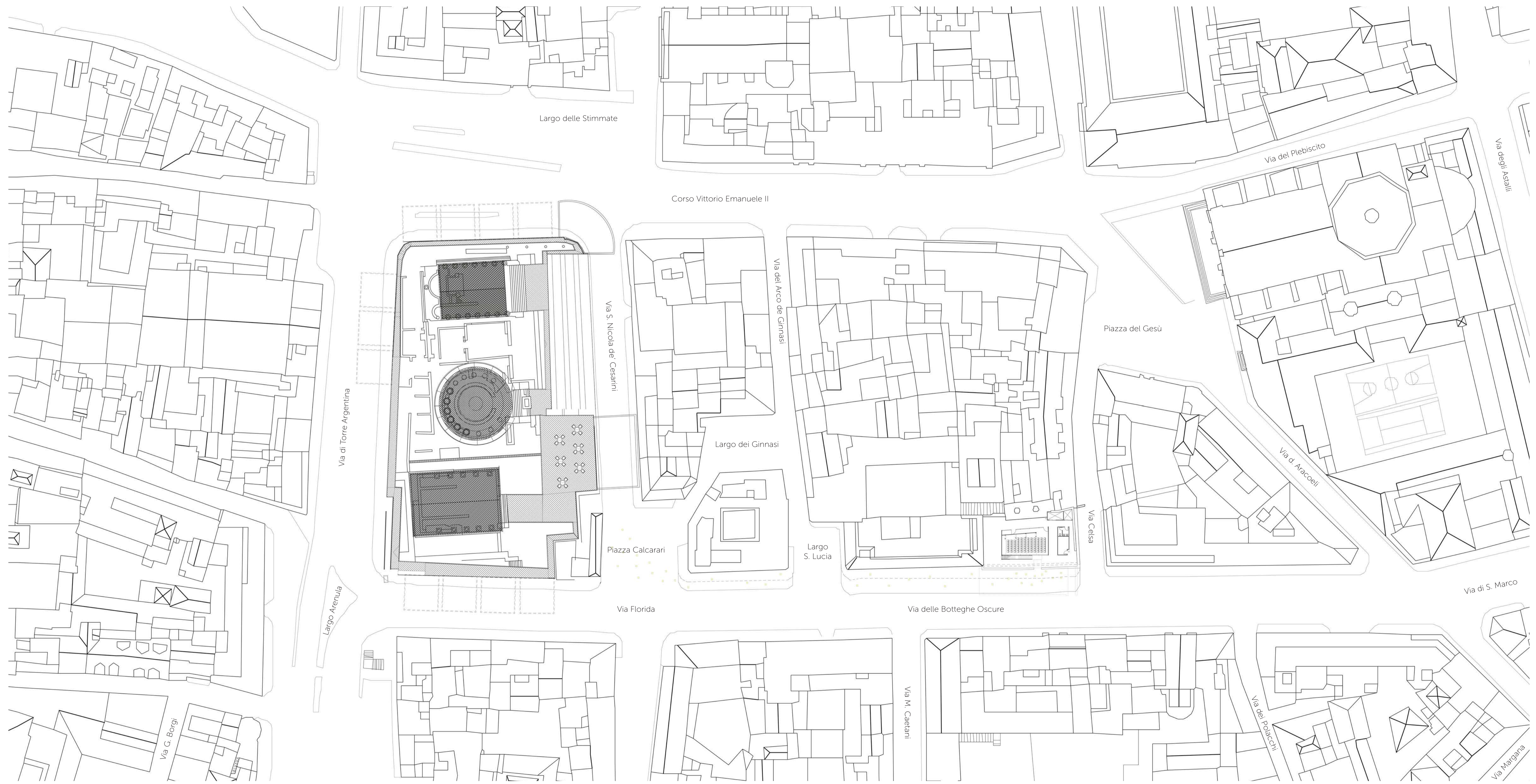
West Transverse Section | CB 2



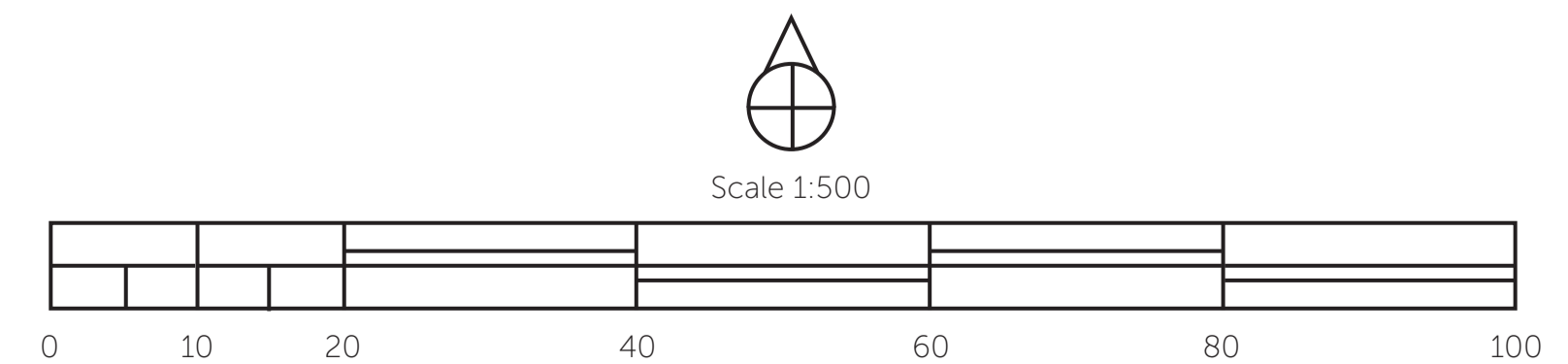
North Longitudinal Section | CB 2

Site Plan Sections | Scale 1:500

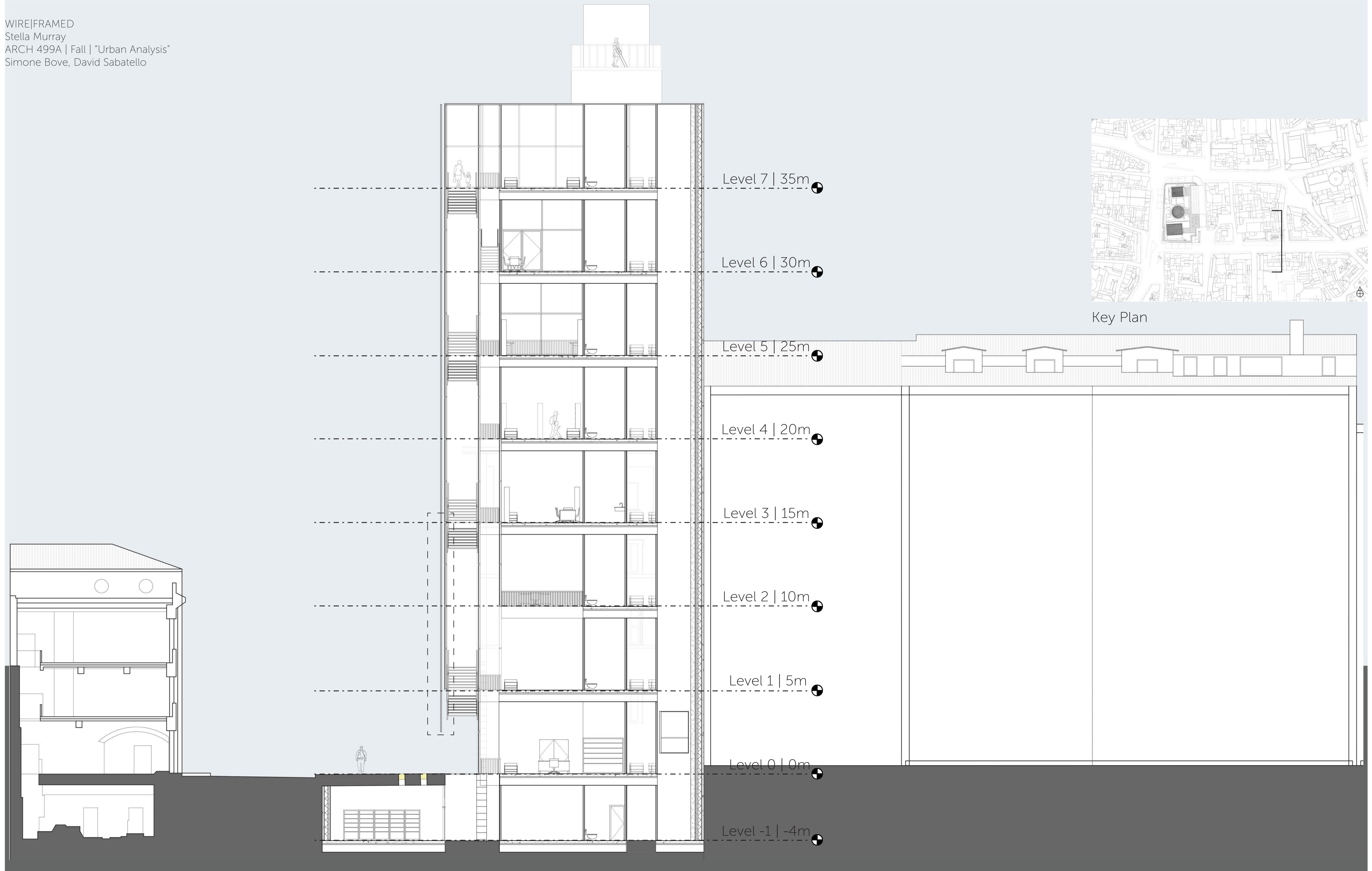
# ORTHOGRAPHICS Sections | Scale Varies



# ORTHOGRAPHICS Site Plan | Scale 1:500



WIRE|FRAMED  
Stella Murray  
ARCH 499A | Fall | "Urban Analysis"  
Simone Bove, David Sabatello



**ORTHOGRAPHICS** West Transverse Section | Scale 1:100



# ORTHOGRAPHICS West Elevation | Scale 1:100



- Pre-existing Central Electrica Power Station forms the foundation...
- ... Its removal left behind a covered plaza, which acts as the entrance to the Forum
- Below the plaza: theater/auditorium, service rooms and parking spaces
- Above the covered plaza: the entrance lobby, galleries, restaurant and administrative office

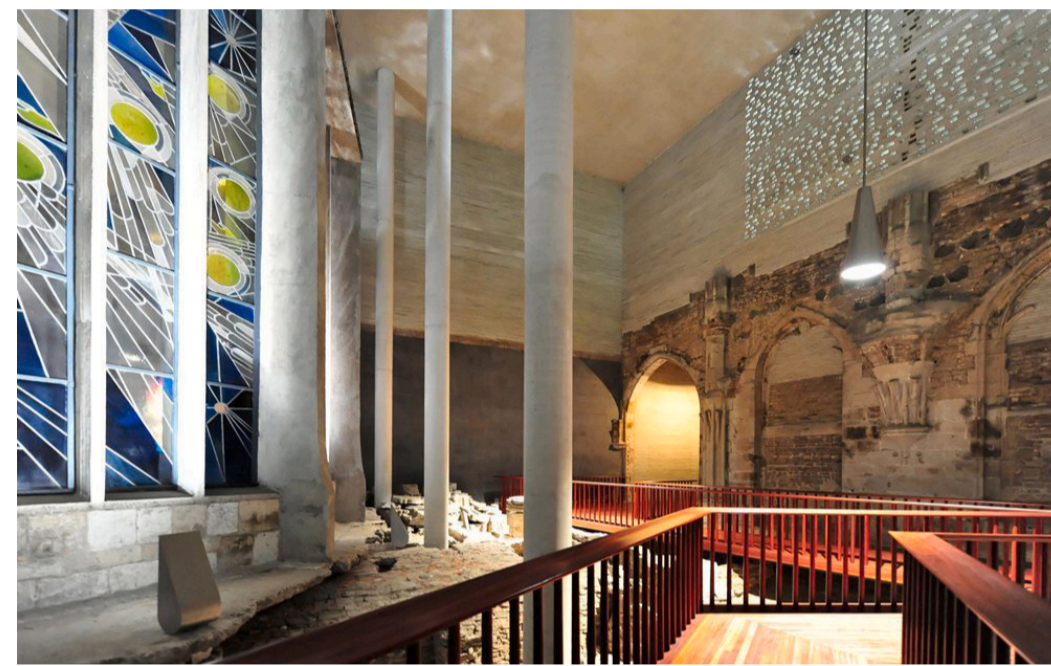
CaixaForum Madrid | Herzog & de Meuron

- The surrounding buildings form a "village of memory"
- Materials: steel and glass units to fit among the buildings
- Its vertical aspect is directed downward to construct a below-street level area...
- ... To compensate for the requested expansion of 10,000 m<sup>2</sup>
- Open "plaza" at its center functions publicly as breathing room

Expansion & Renovation of the Morgan Library | RPBW



# PRECEDENTS CaixaForum | Morgan Library



- The museum respects the site's history and preserves its individuality
- Materials: grey brick to unite the destroyed fragments of the site
- "This project emerged from the inside out, and from the place," Zumthor
- A secret garden courtyard is located at the heart of the building

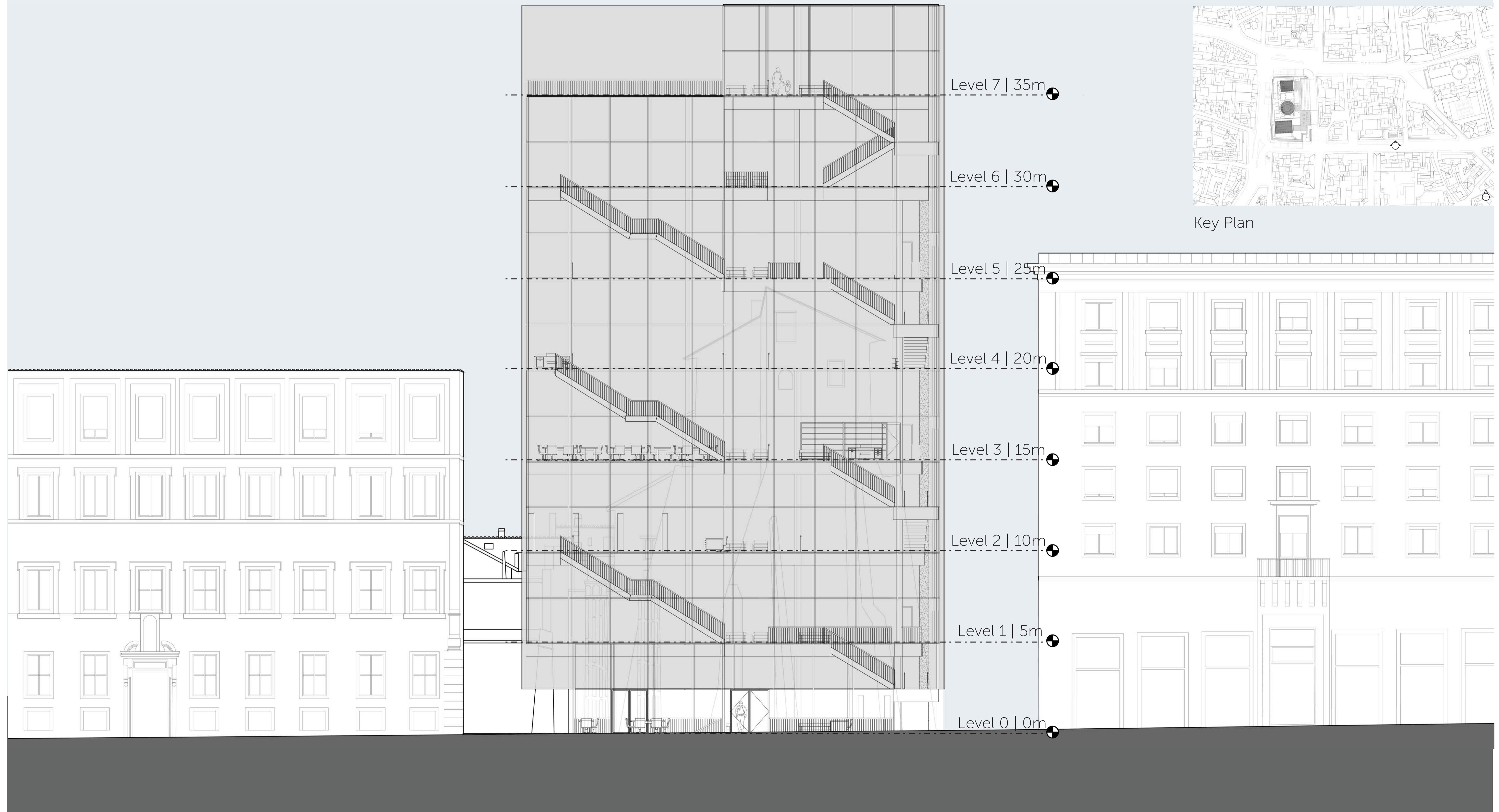
Gallery of Kolumba Museum | Peter Zumthor

- The museum integrates a new arts quarter into the Gothic district of Barcelona
- A glazed, triple-height ramp-hall, which faces the new Placa des Angels, is the means by which visitors access the gallery spaces on six consecutive levels
- The natural source of light for the main gallery spaces filters down to lower levels through glass block floors and open-to-below spaces



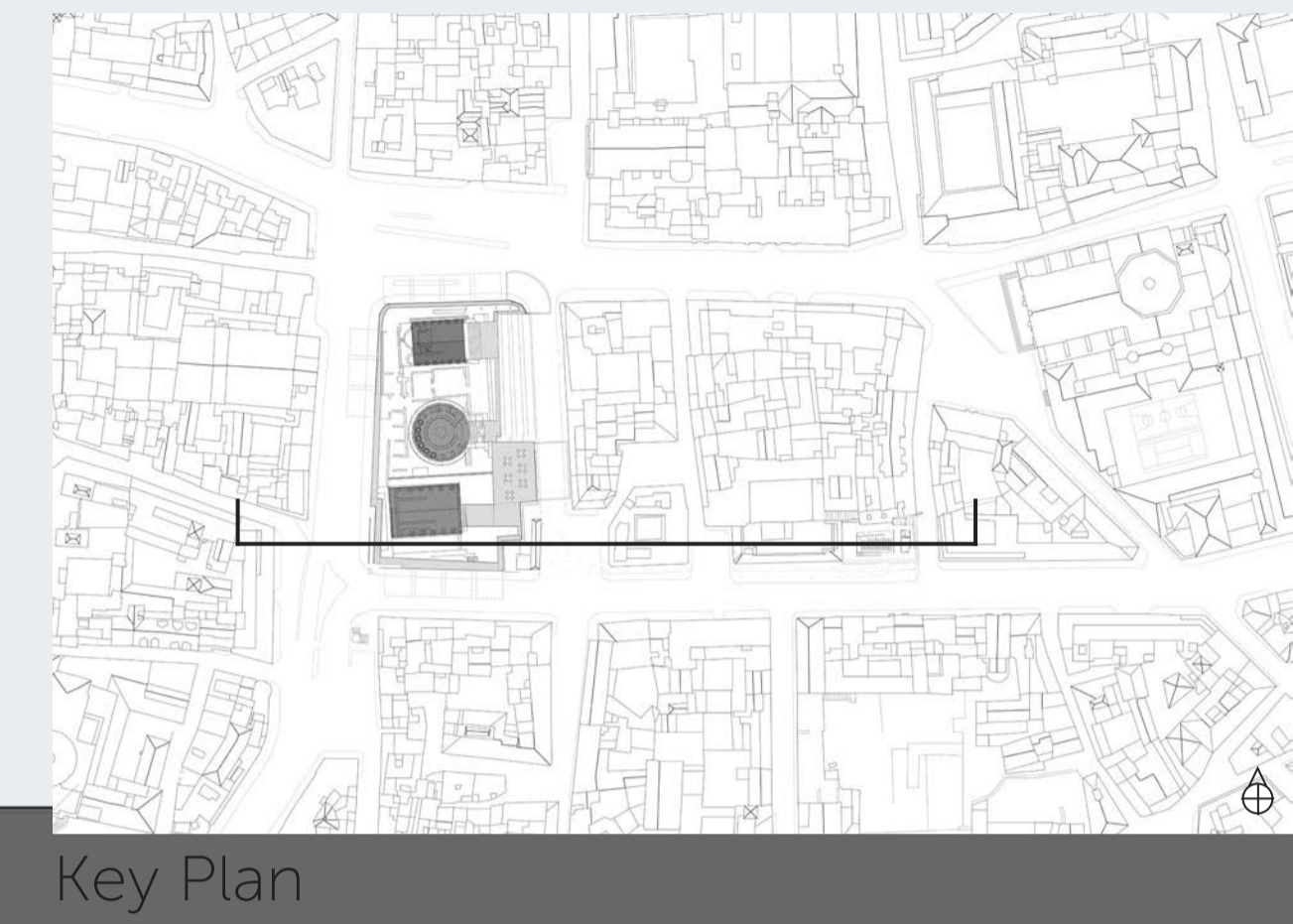
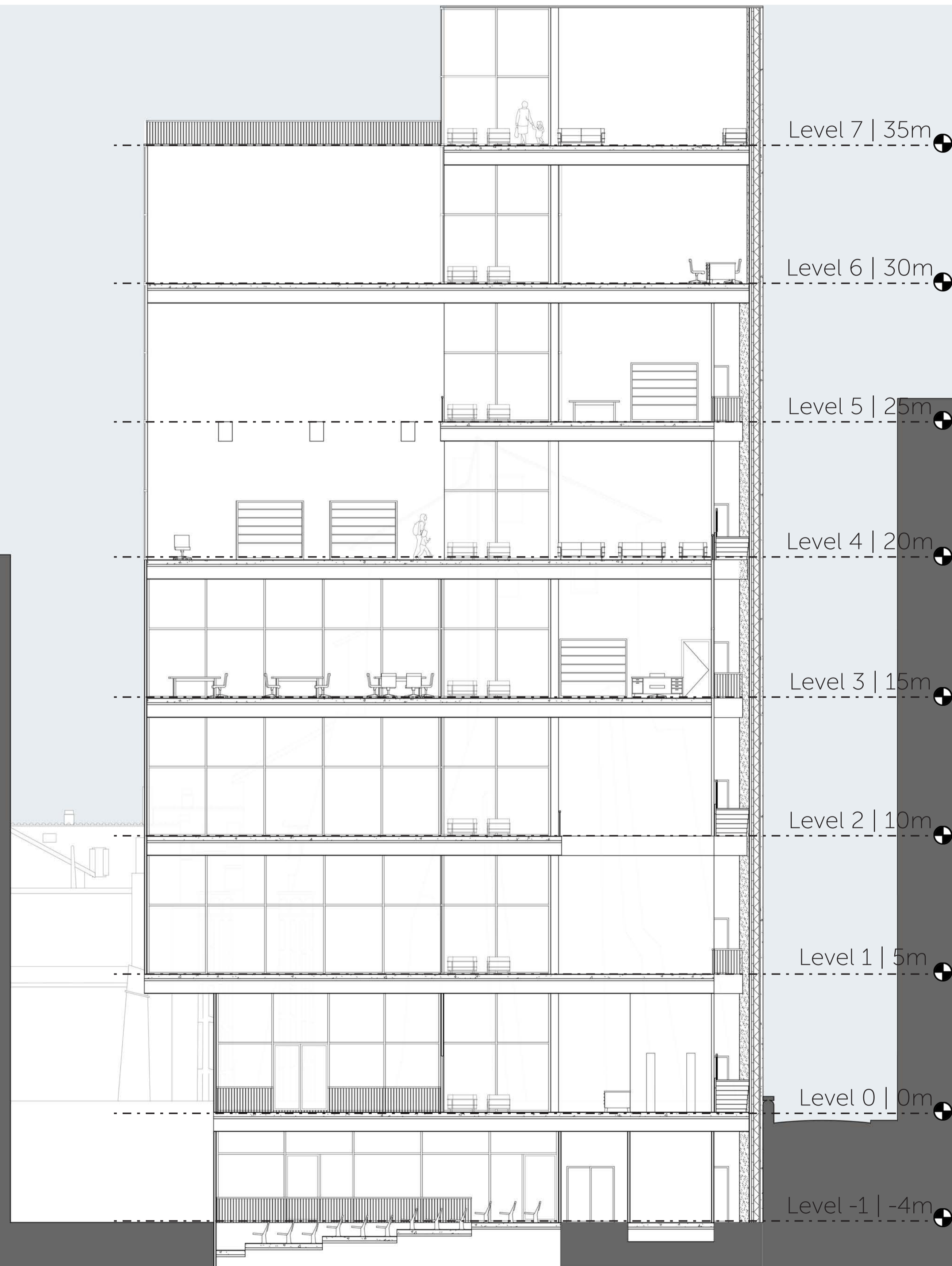
Barcelona Museum of Contemporary Art |  
Richard Meier

# PRECEDENTS Kolumba Museum | Barcelona Museum

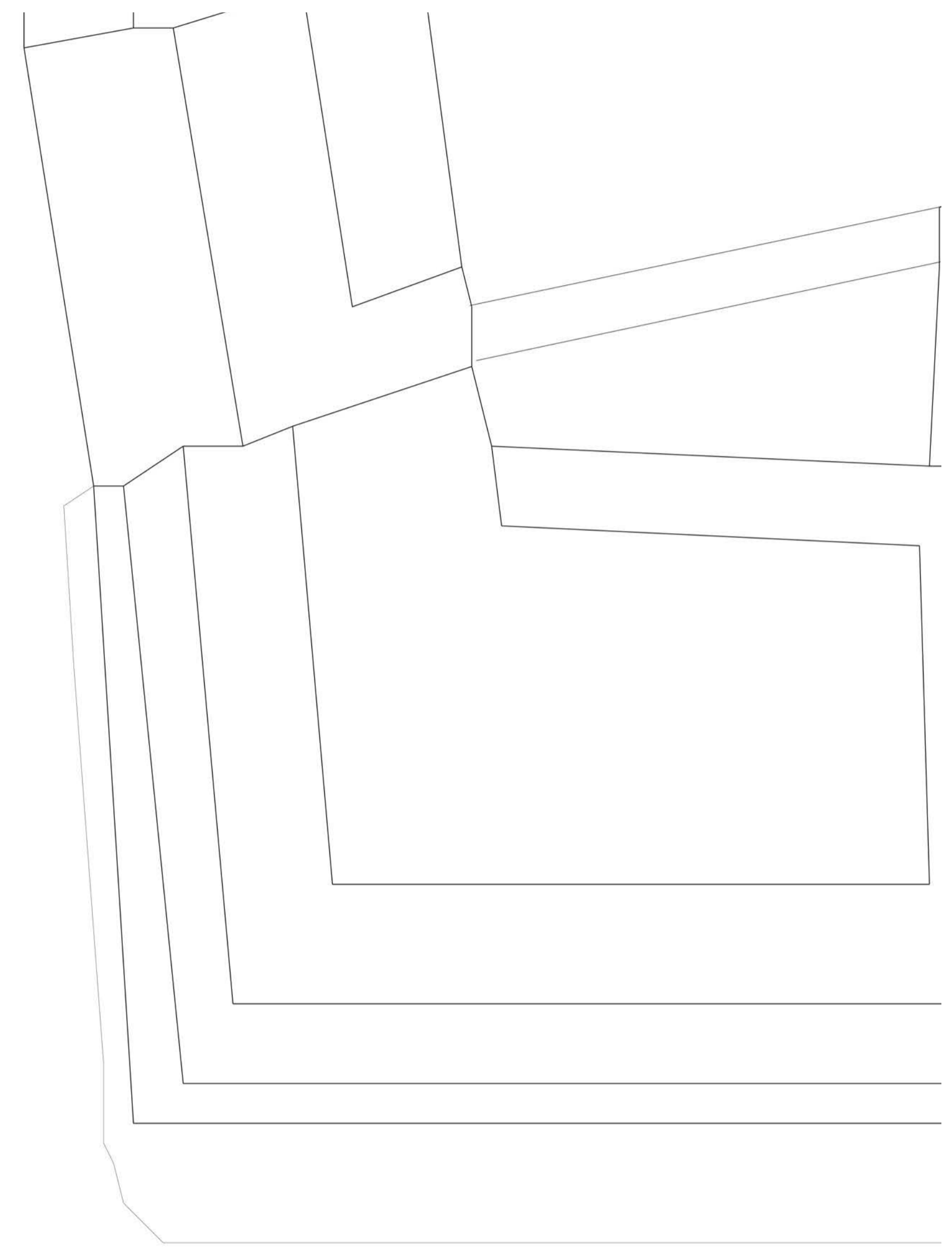
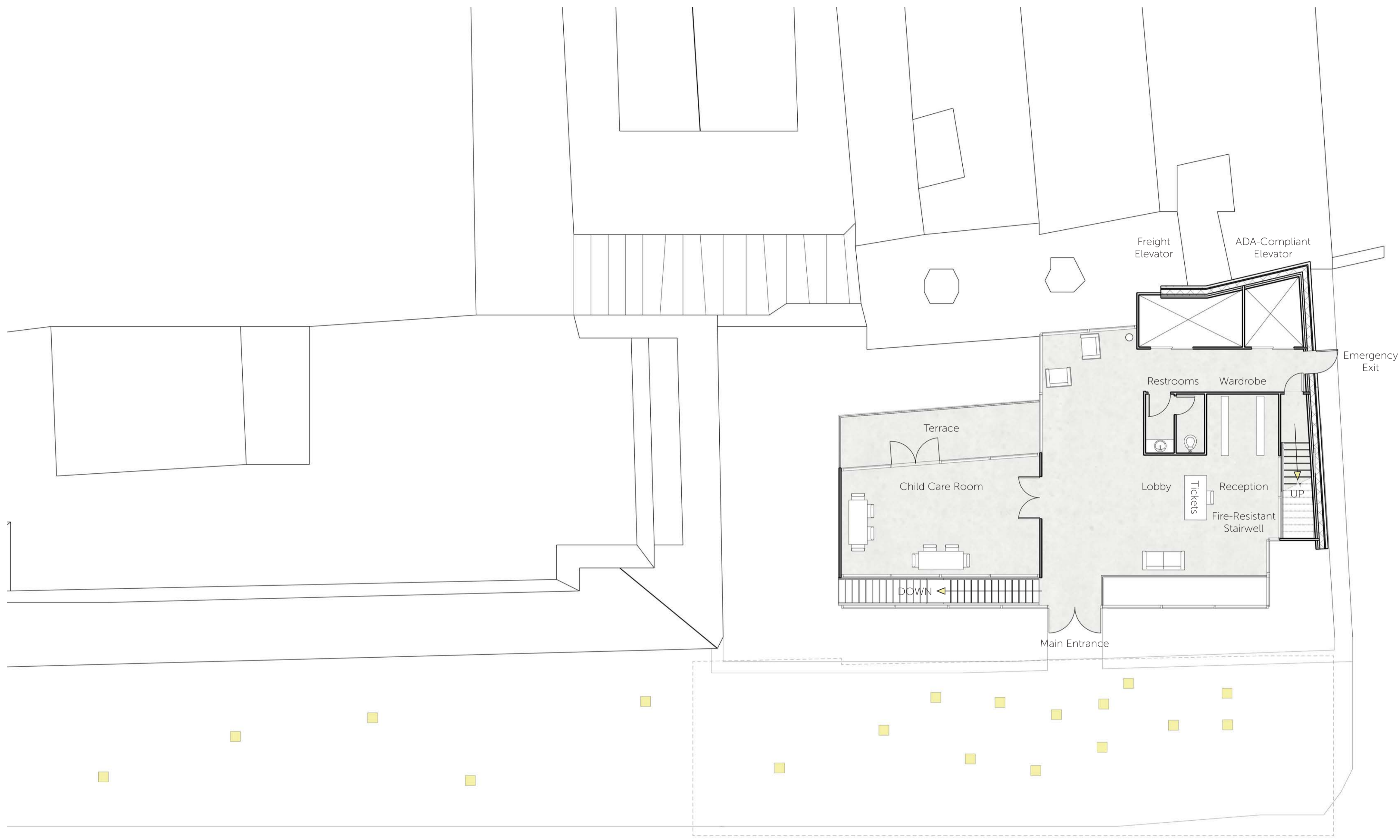


# ORTHOGRAPHICS North Elevation | Scale 1:100



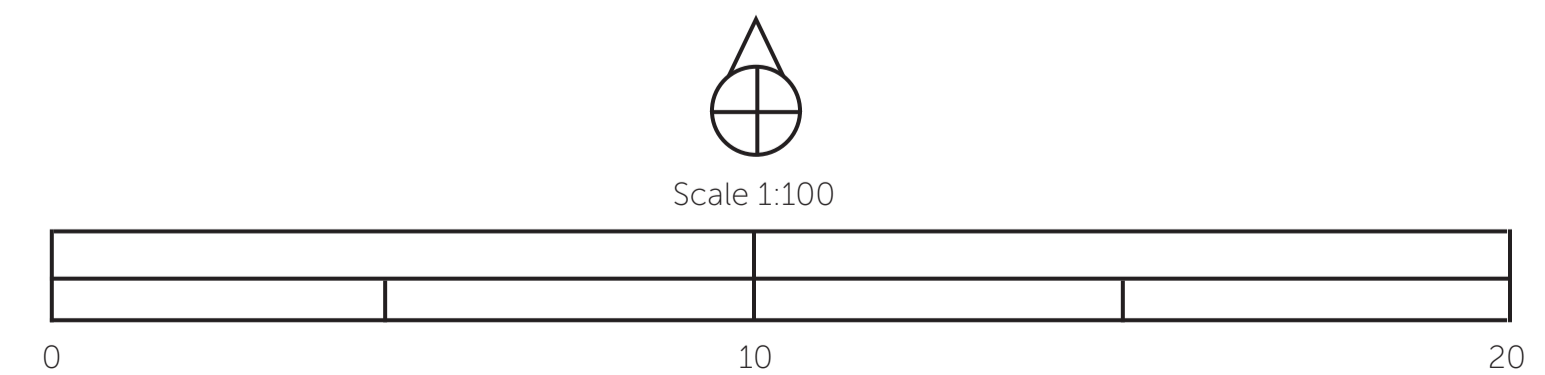


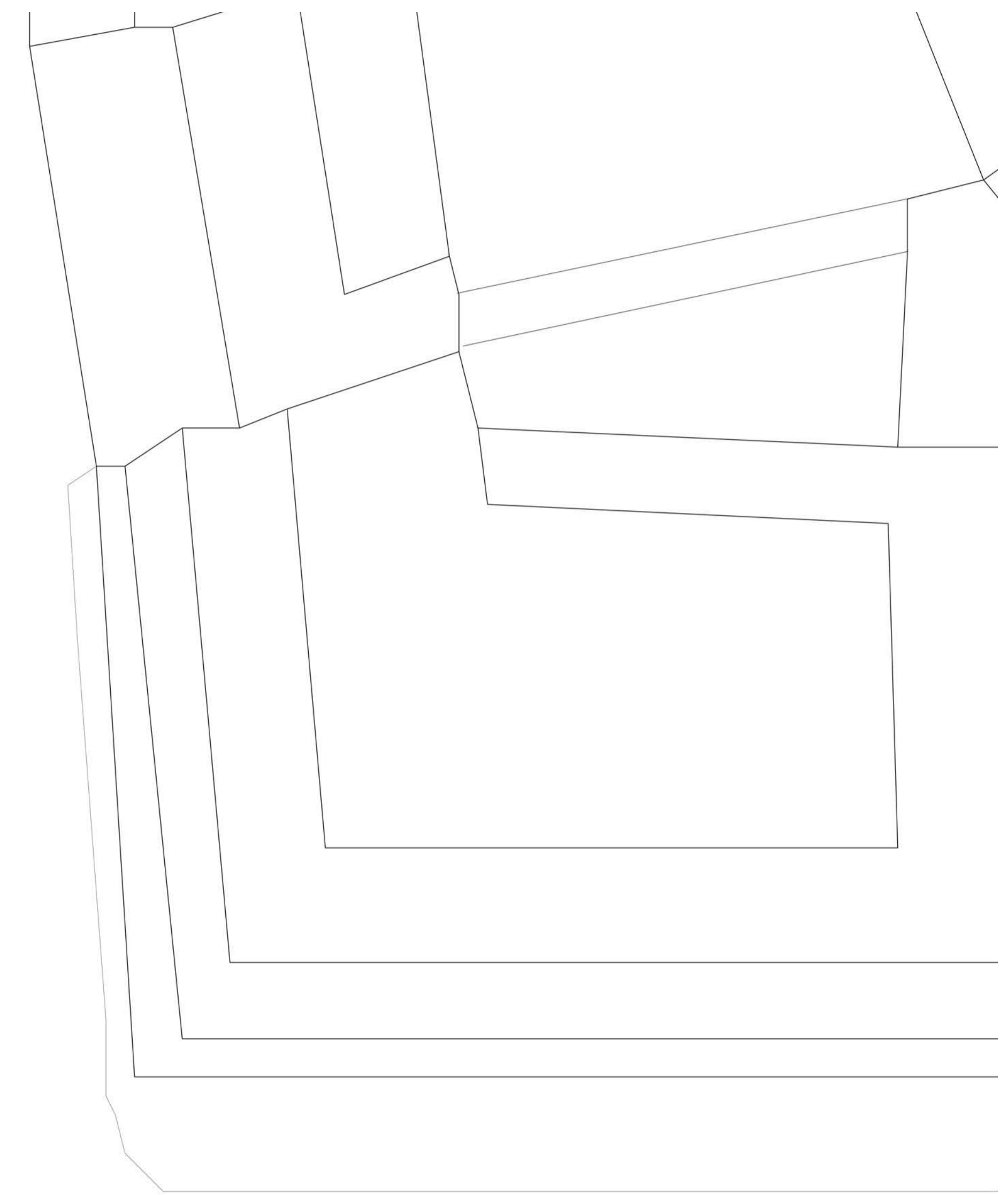
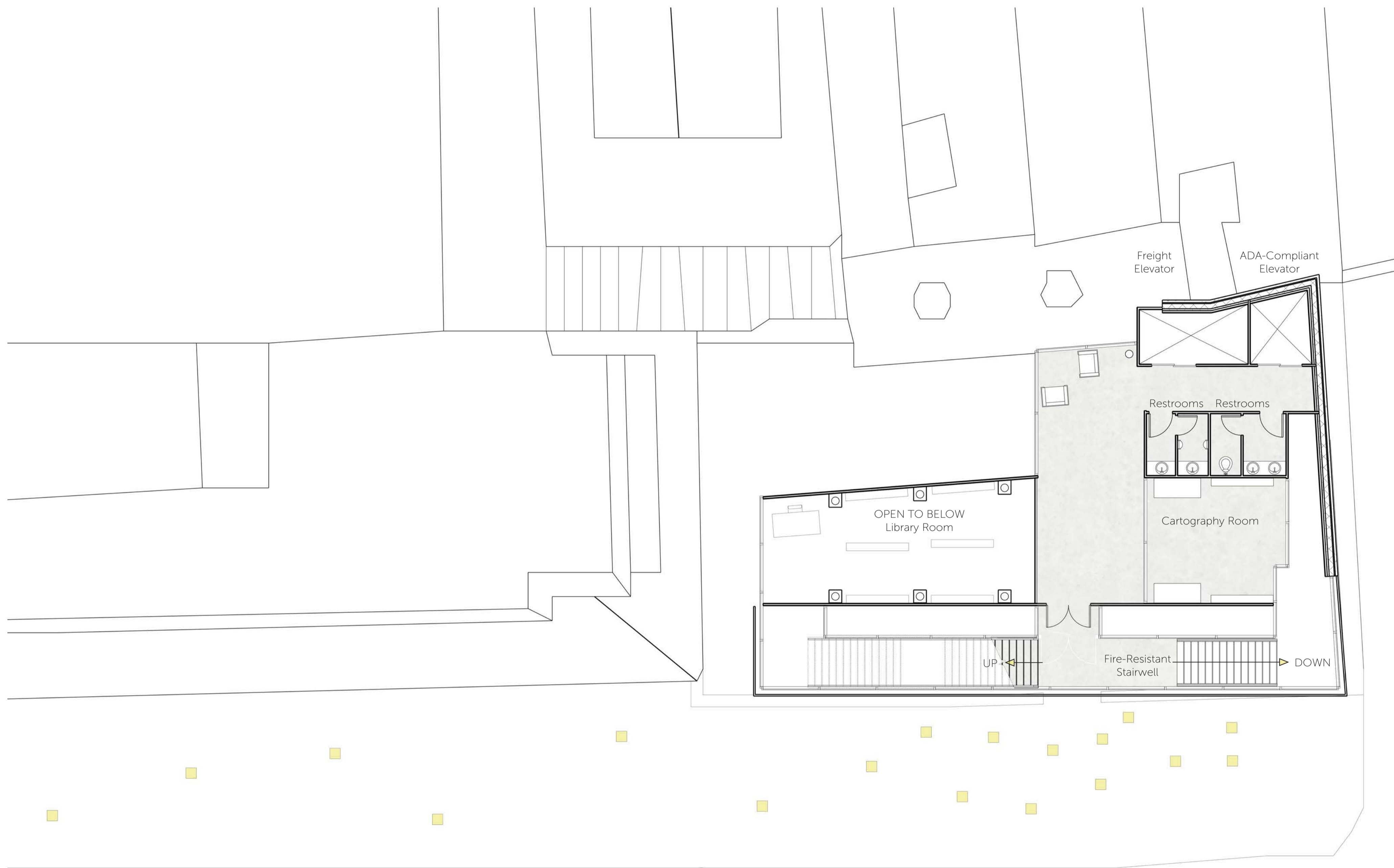
# ORTHOGRAPHICS North Longitudinal Section | Scale 1:100



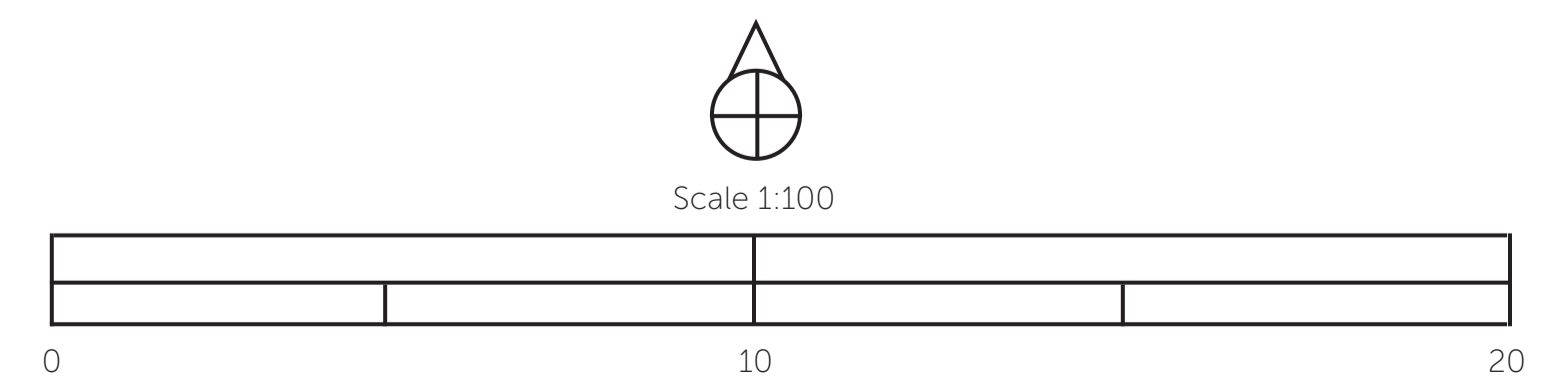
Level 0 | Street Level

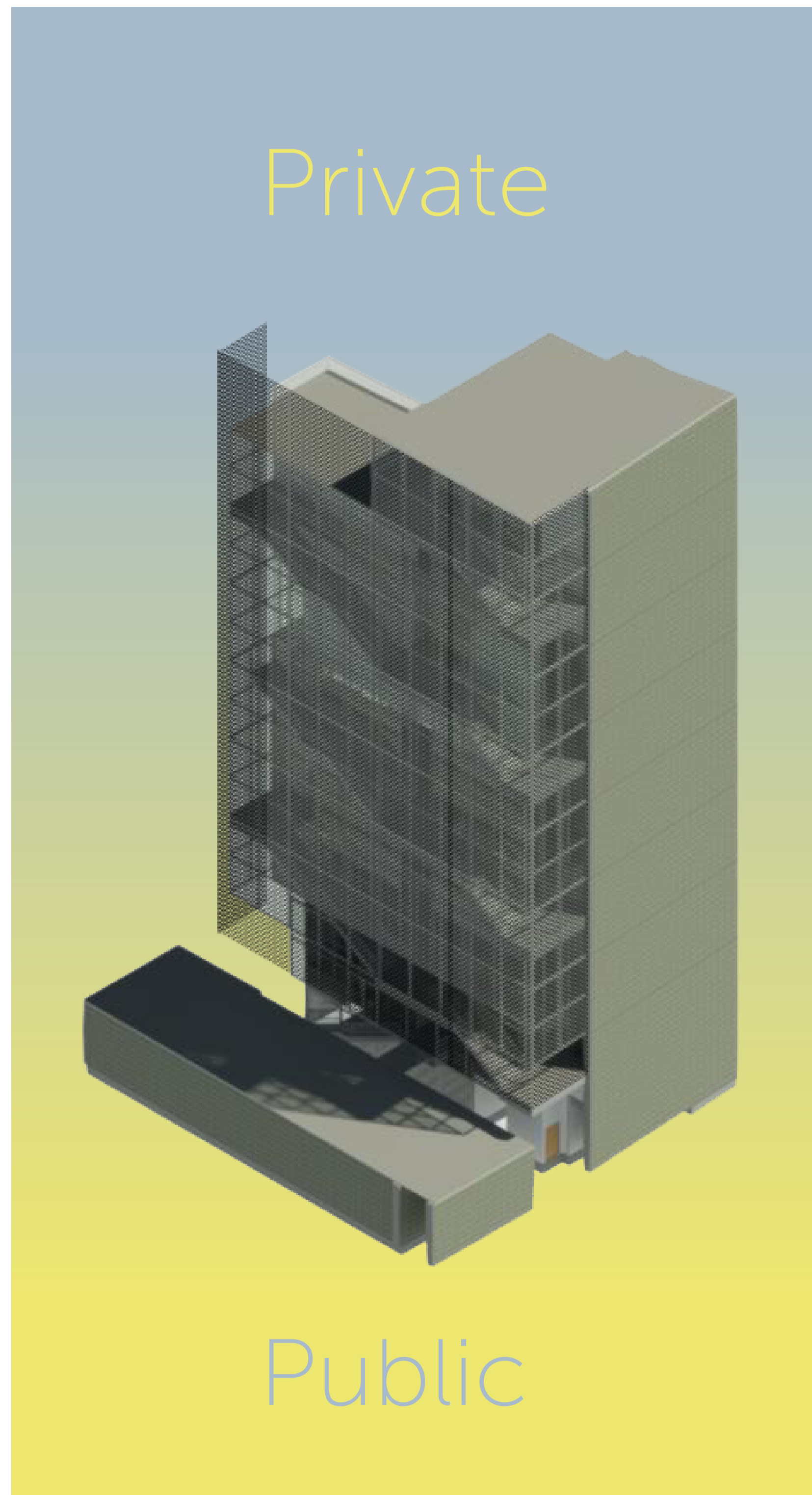
# ORTHOGRAPHICS Floor Plans | Scale 1:100



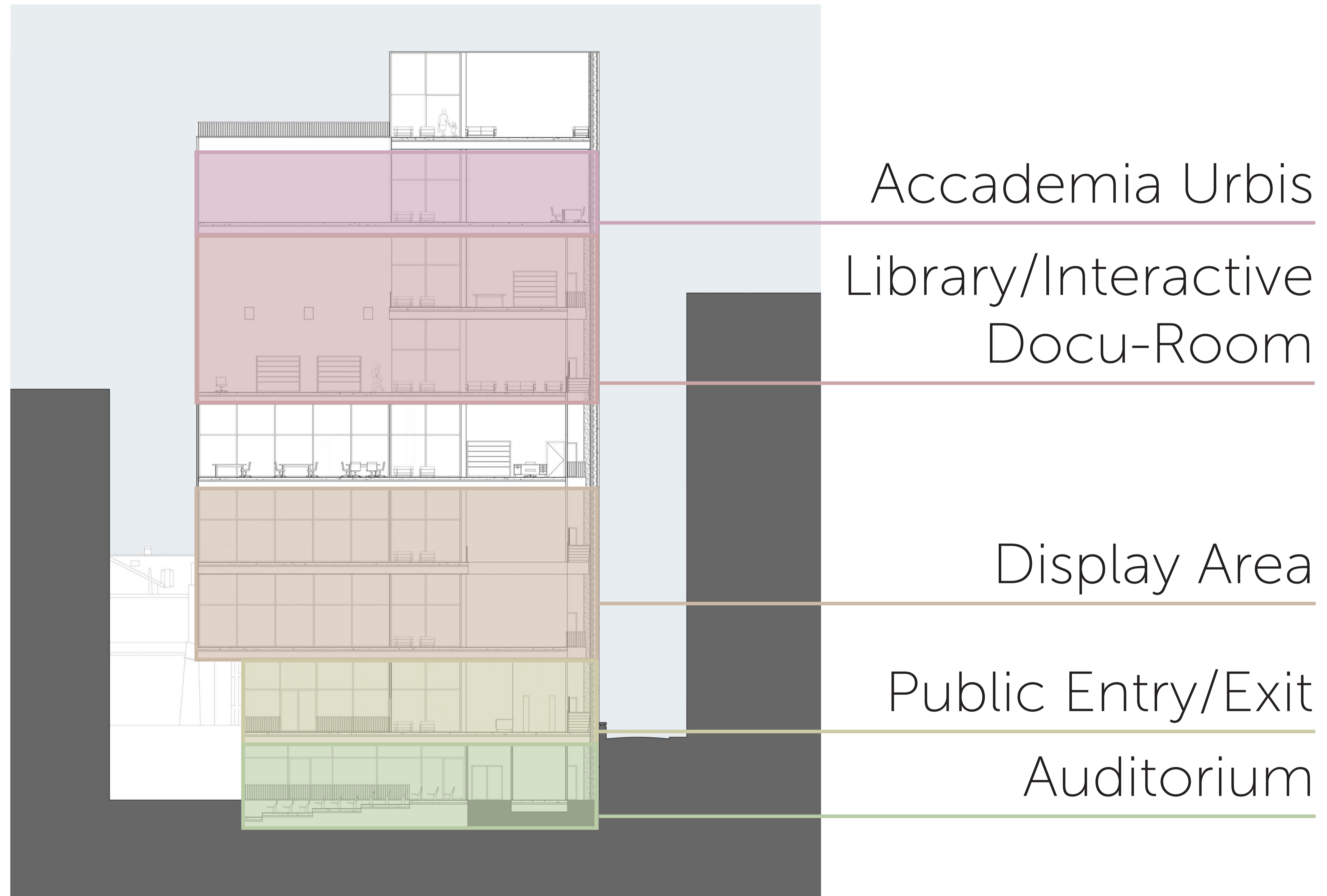


# ORTHOGRAPHICS Floor Plans | Scale 1:100



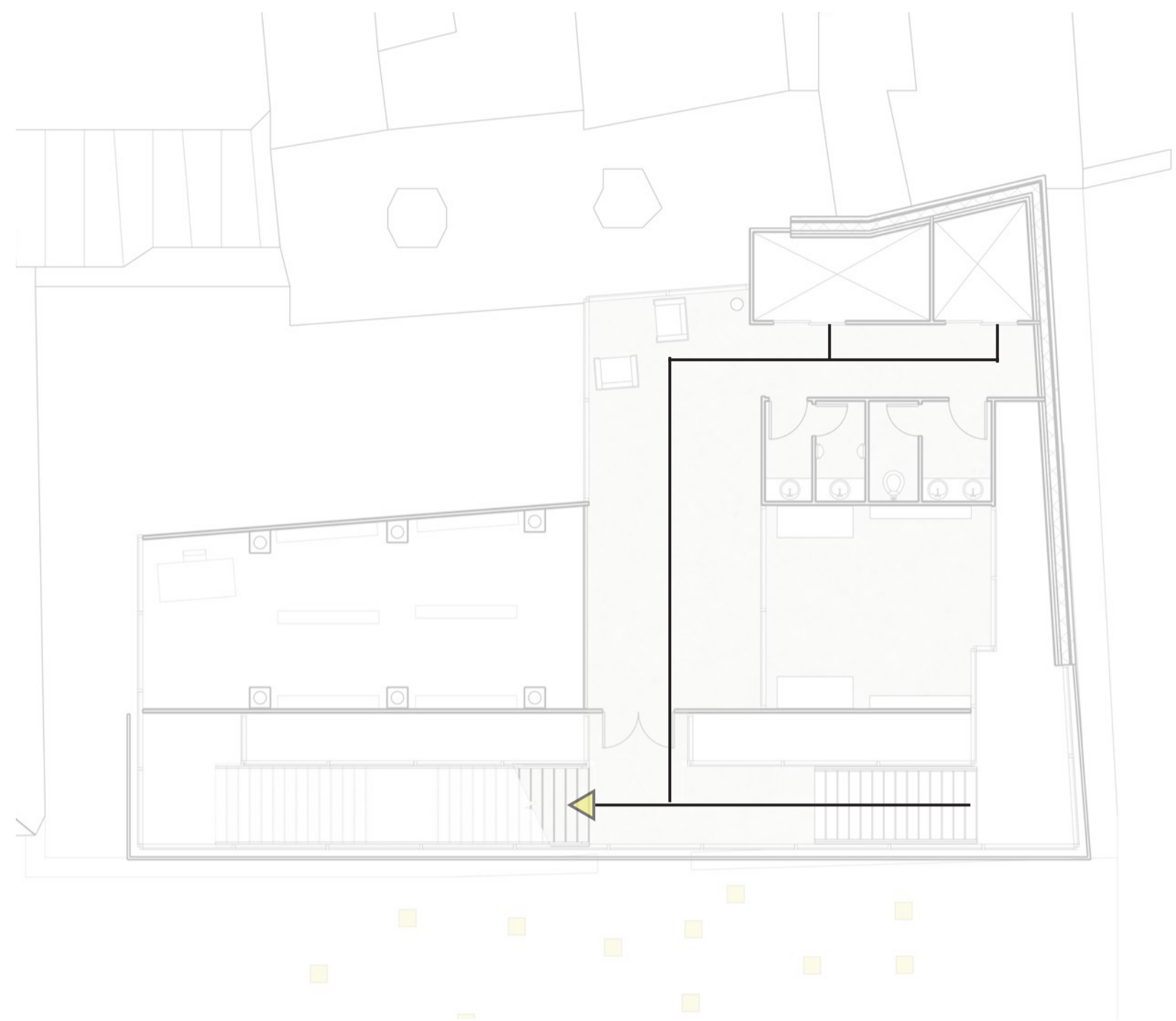


General Scheme

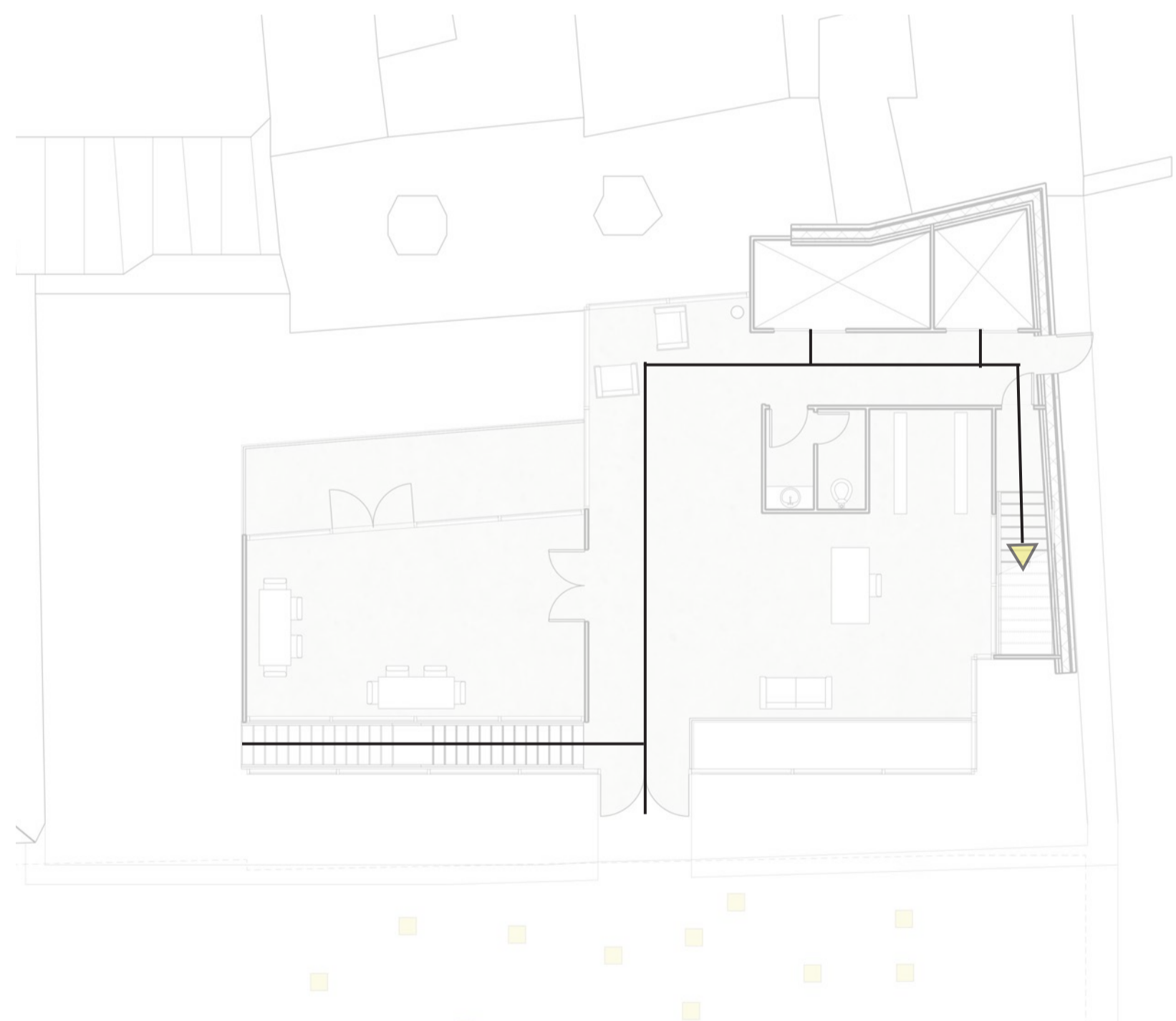


Specific Level-by-Level Scheme

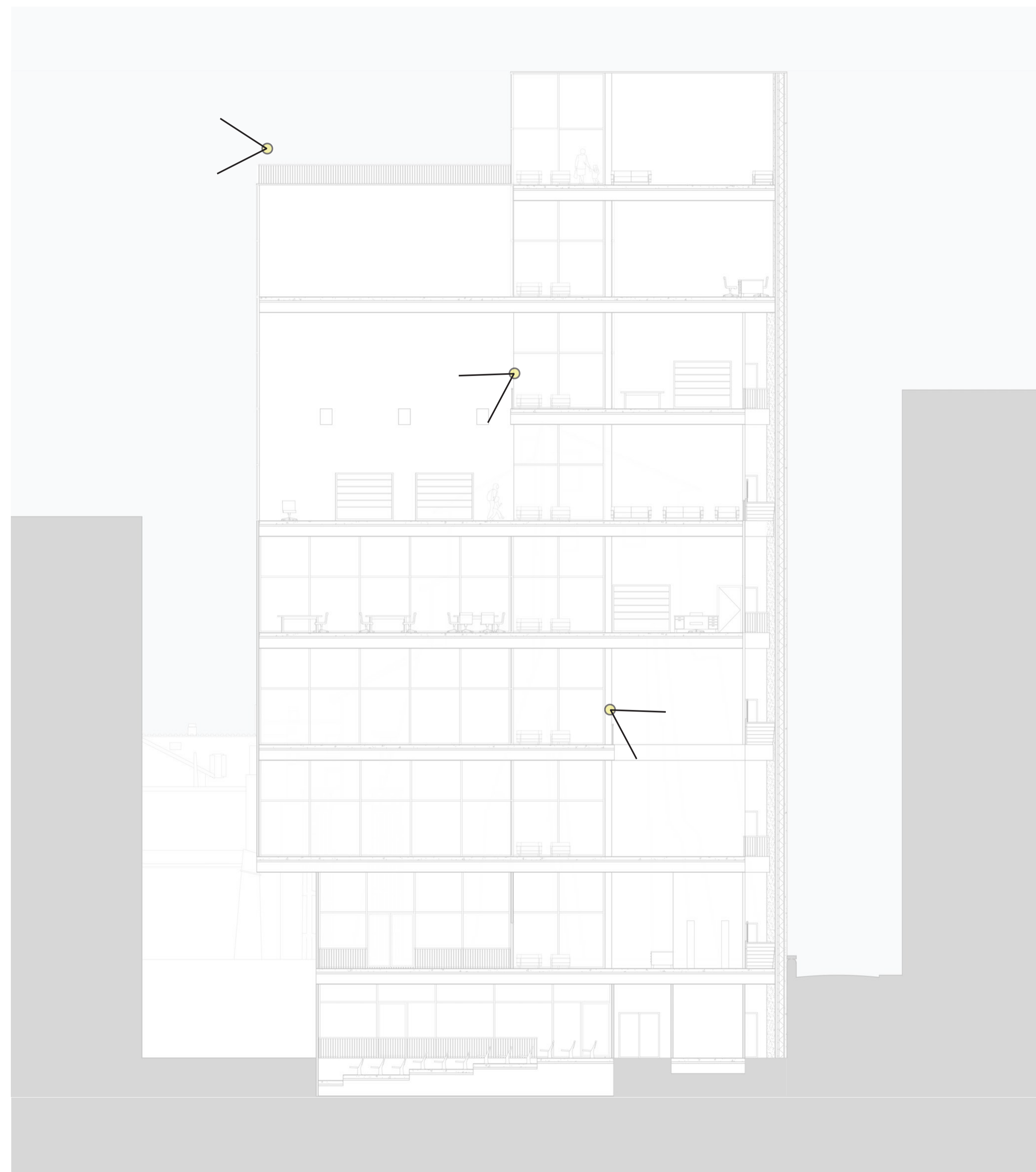
# DIAGRAMS Program



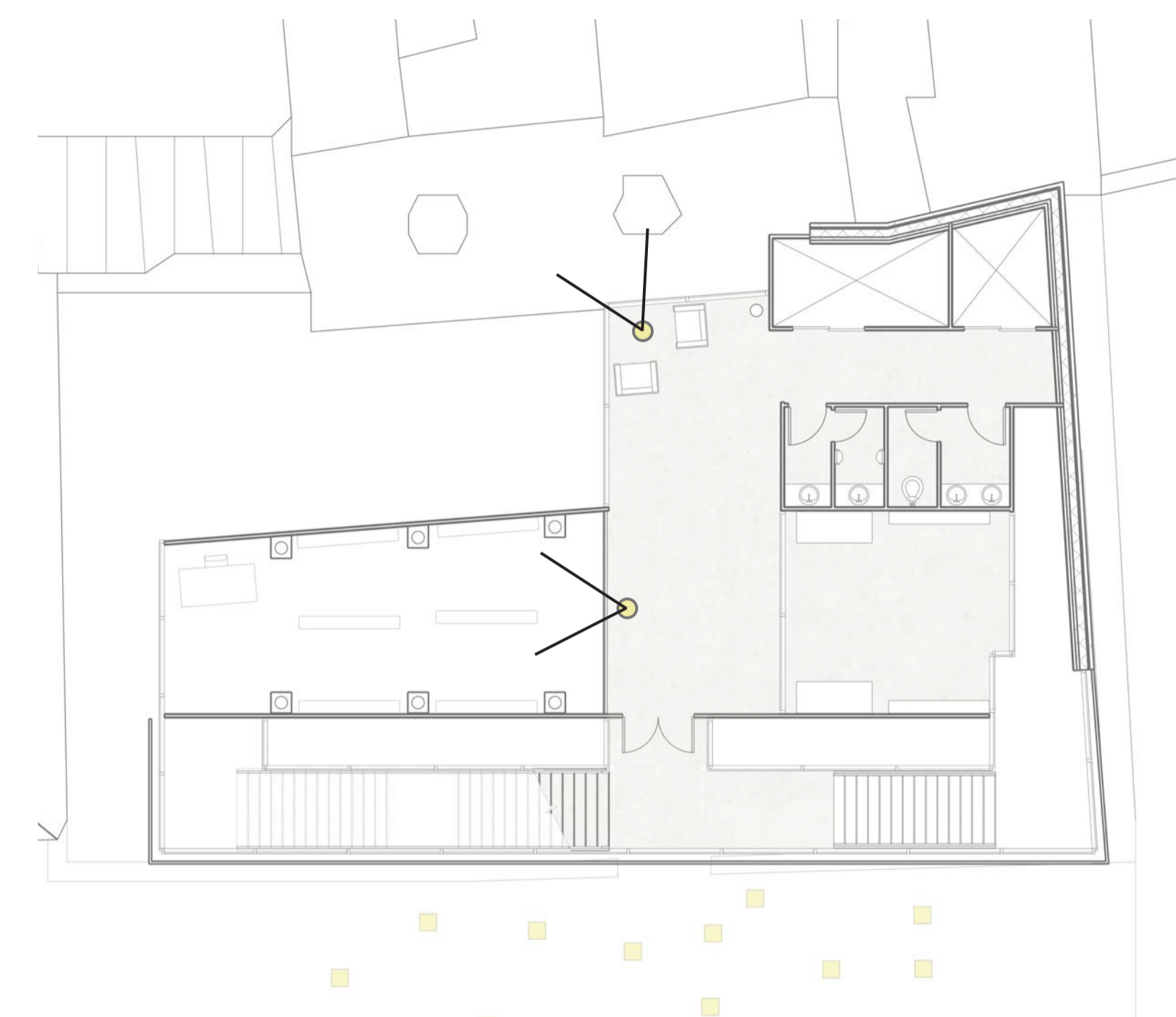
Specific Circulation Scheme | Level 5



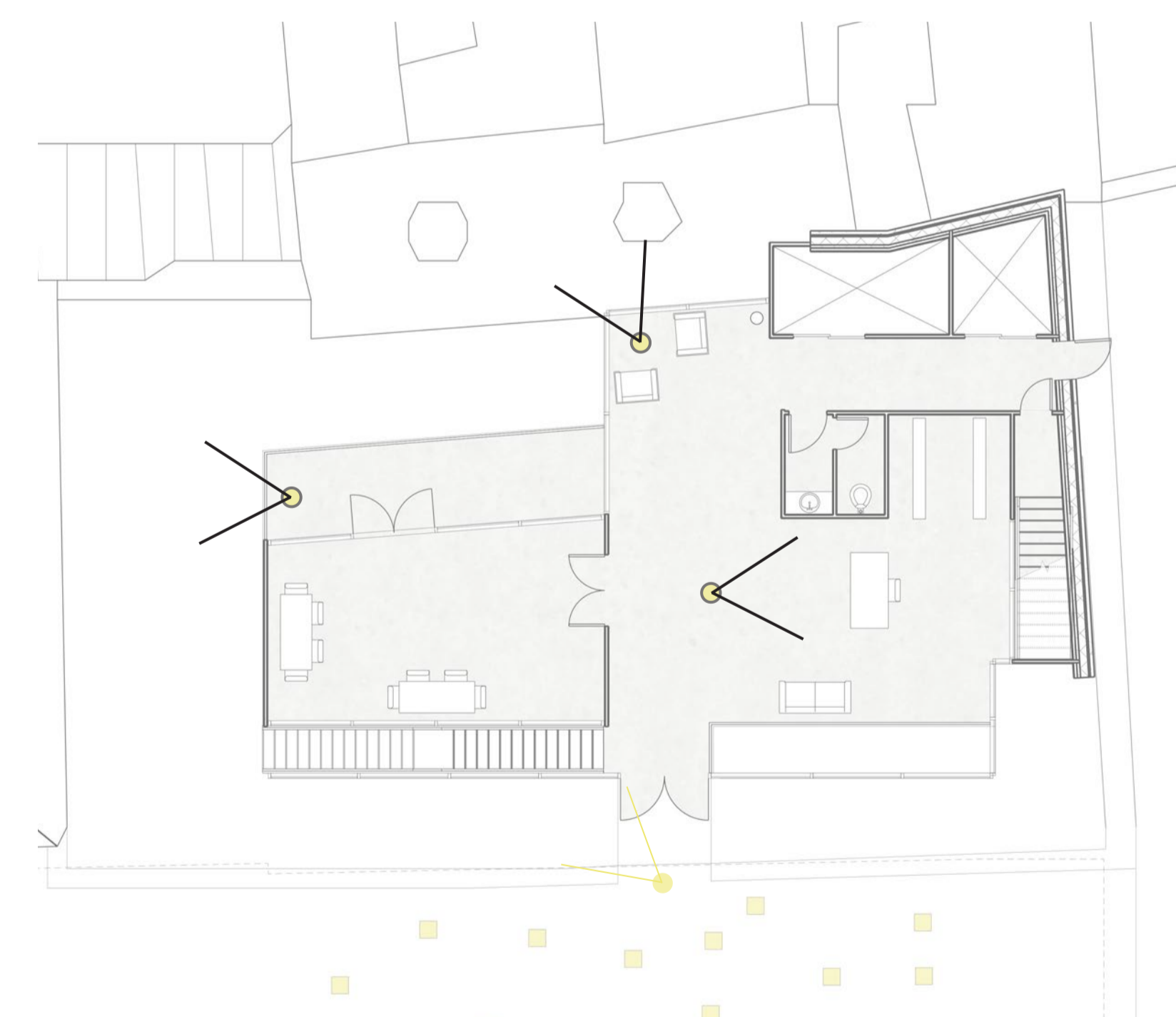
Specific Circulation Scheme | Level 0



Specific Sightlines Scheme | Level-by-Level

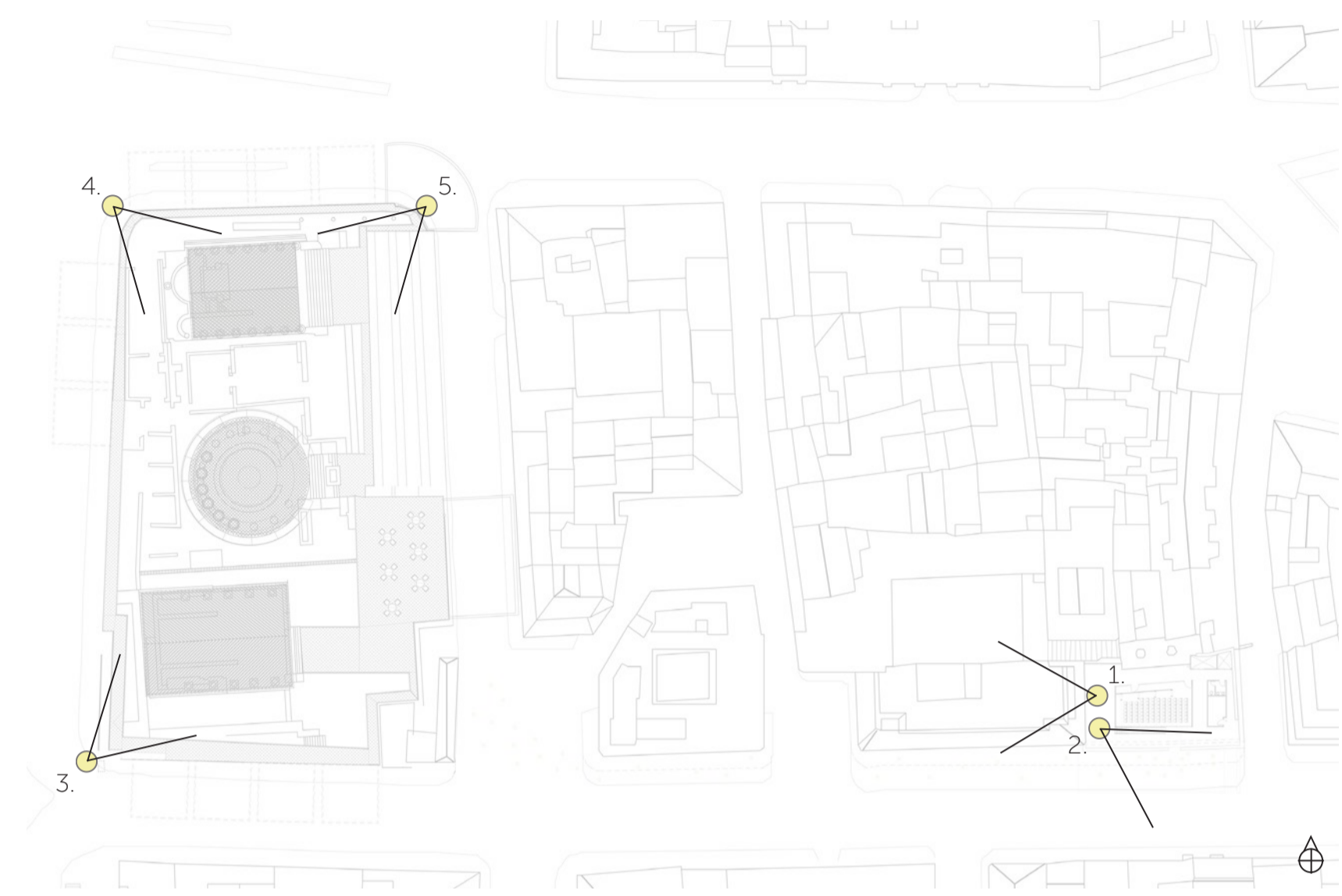


Specific Sightlines Scheme | Level 5

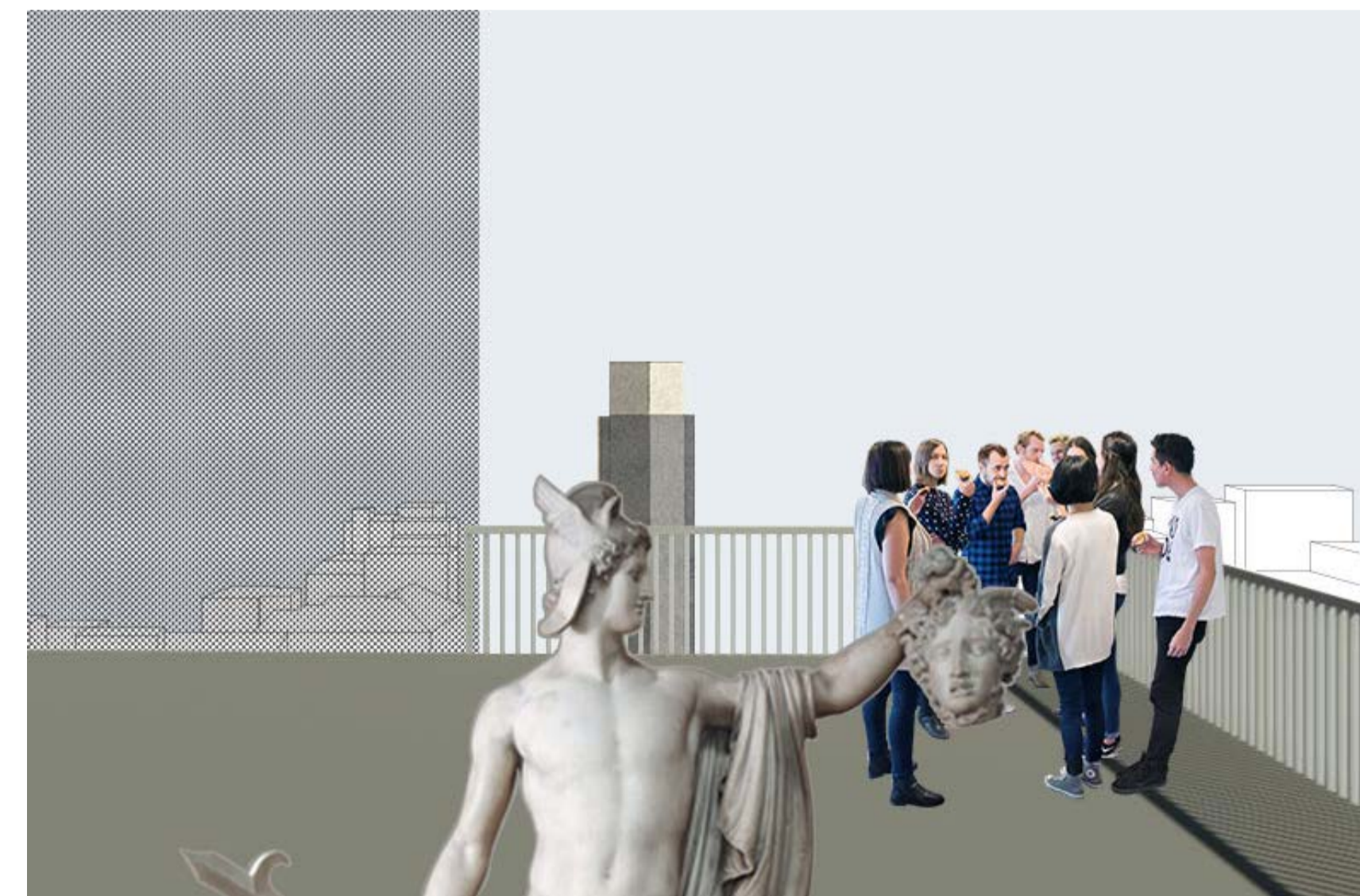


Specific Sightlines Scheme | Level 0

# DIAGRAMS Circulation | Sightlines



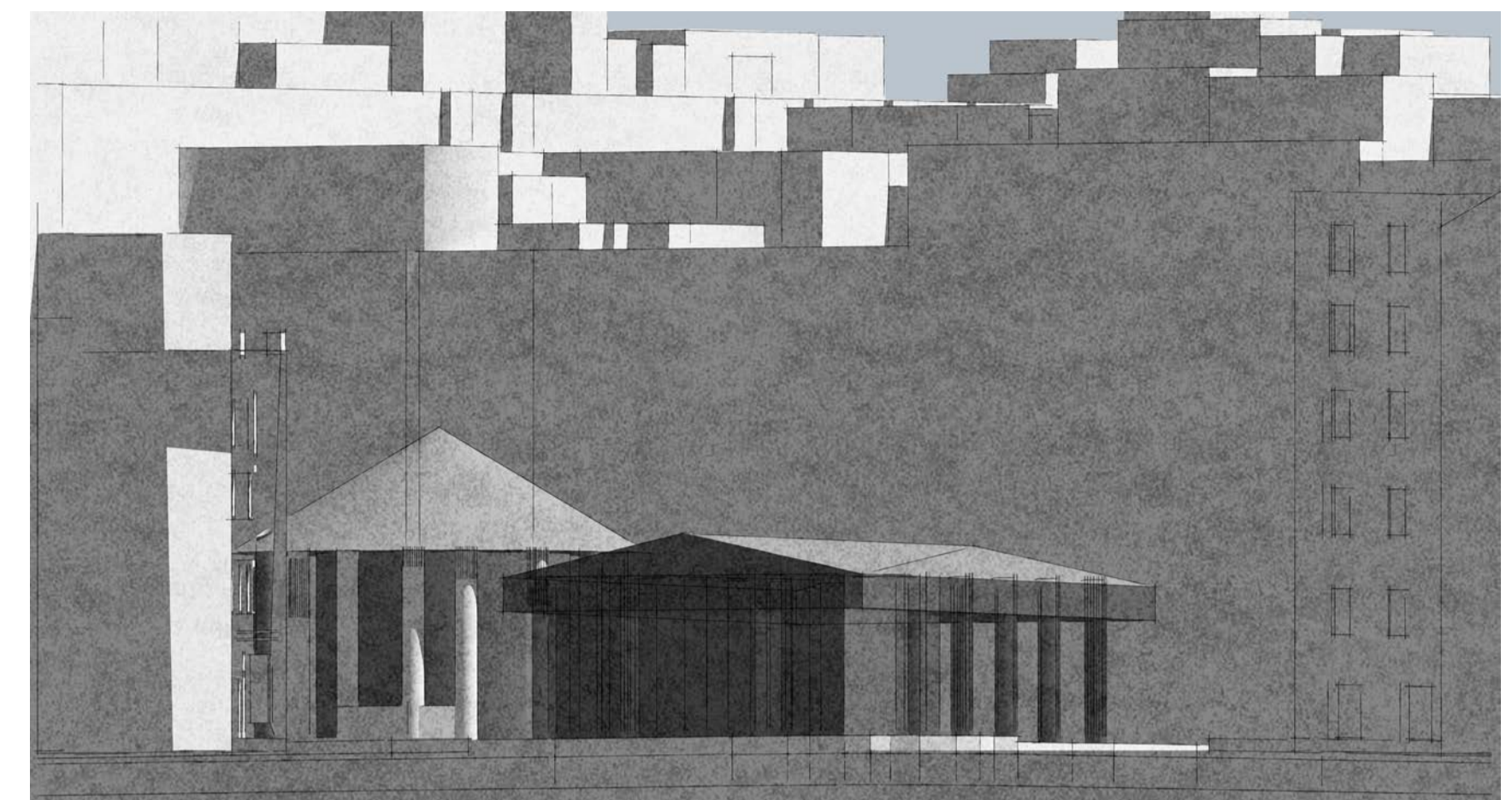
Key Plan



1. View Looking out to Largo di Torre Argentina | Level 7



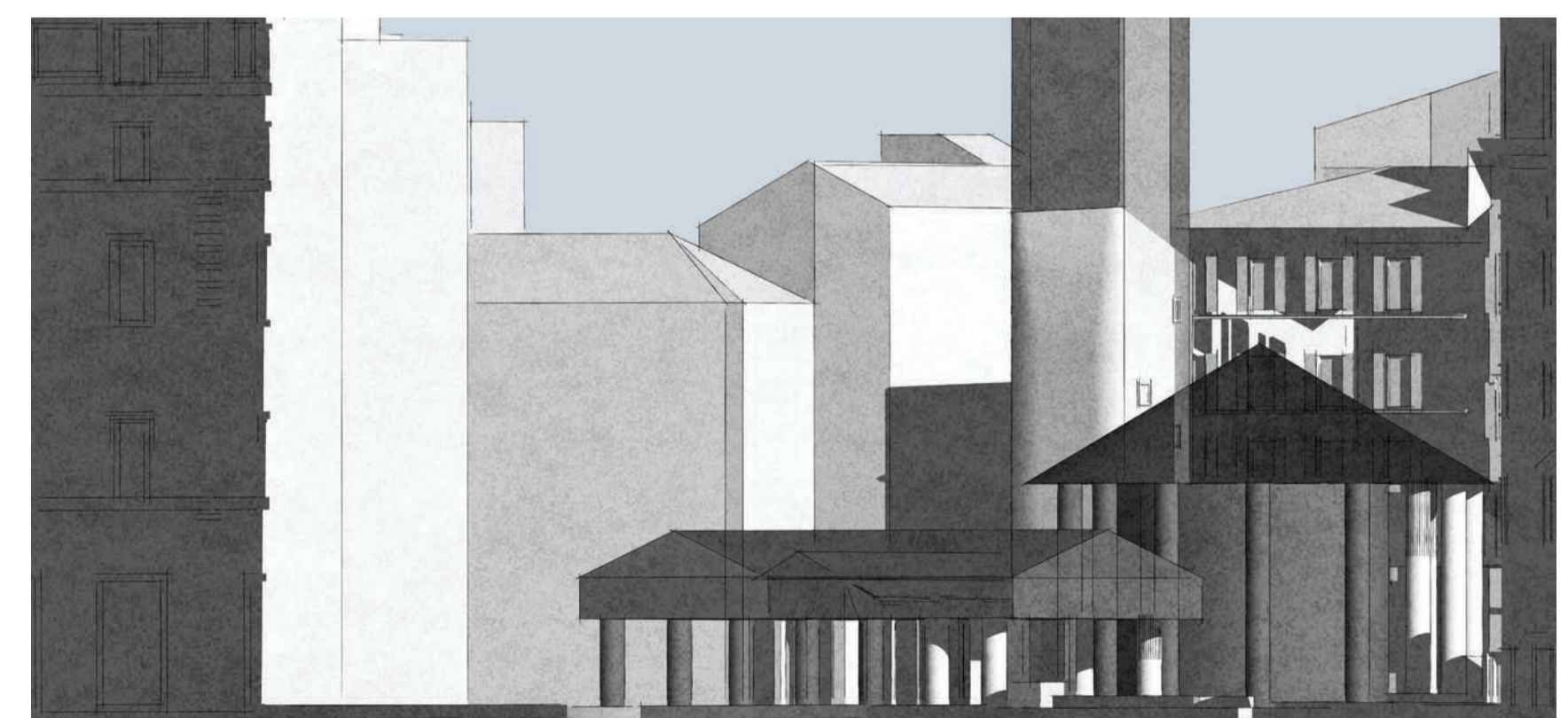
2. View Looking up to Street Level | Level -1



3.

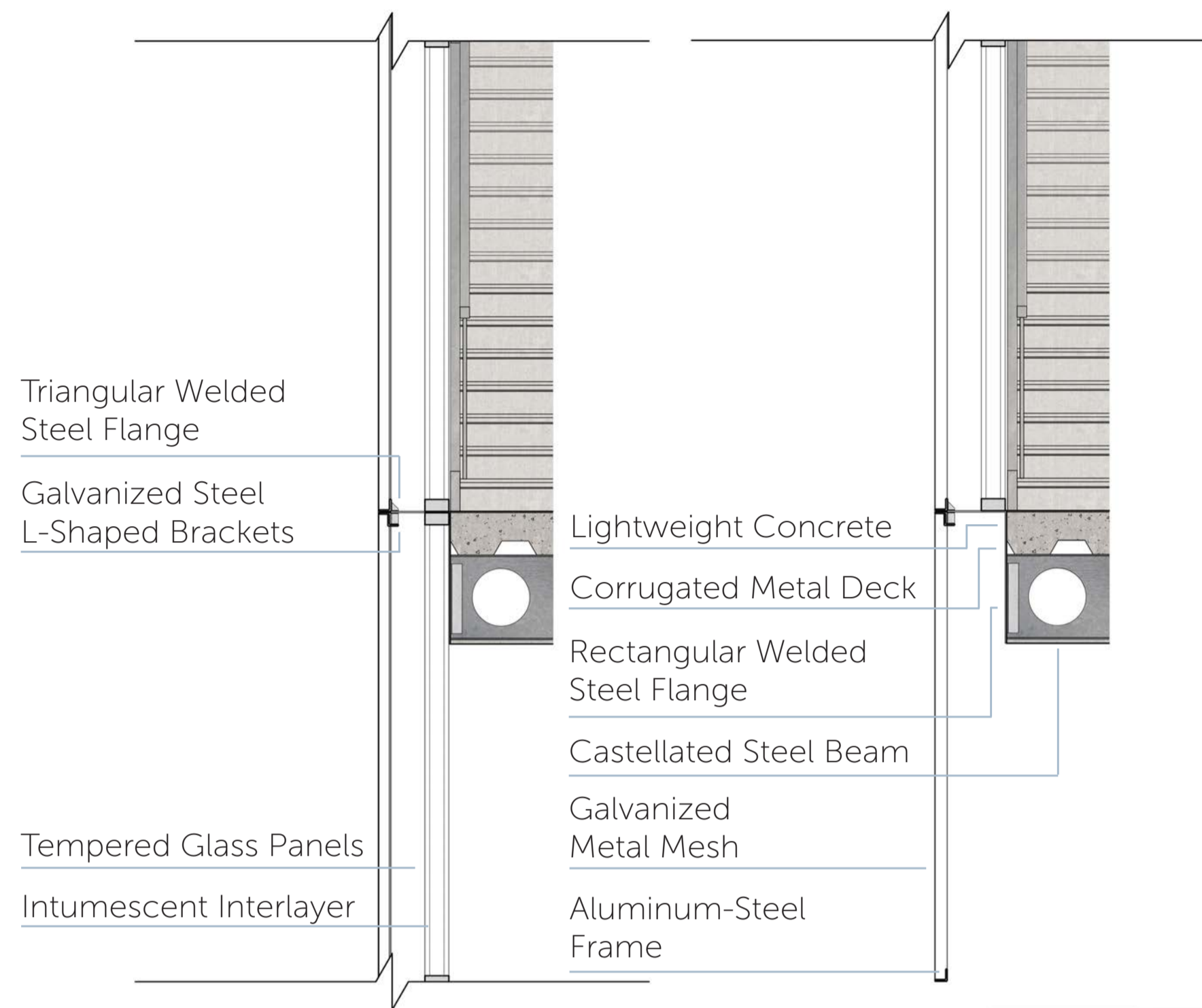


4.



5.

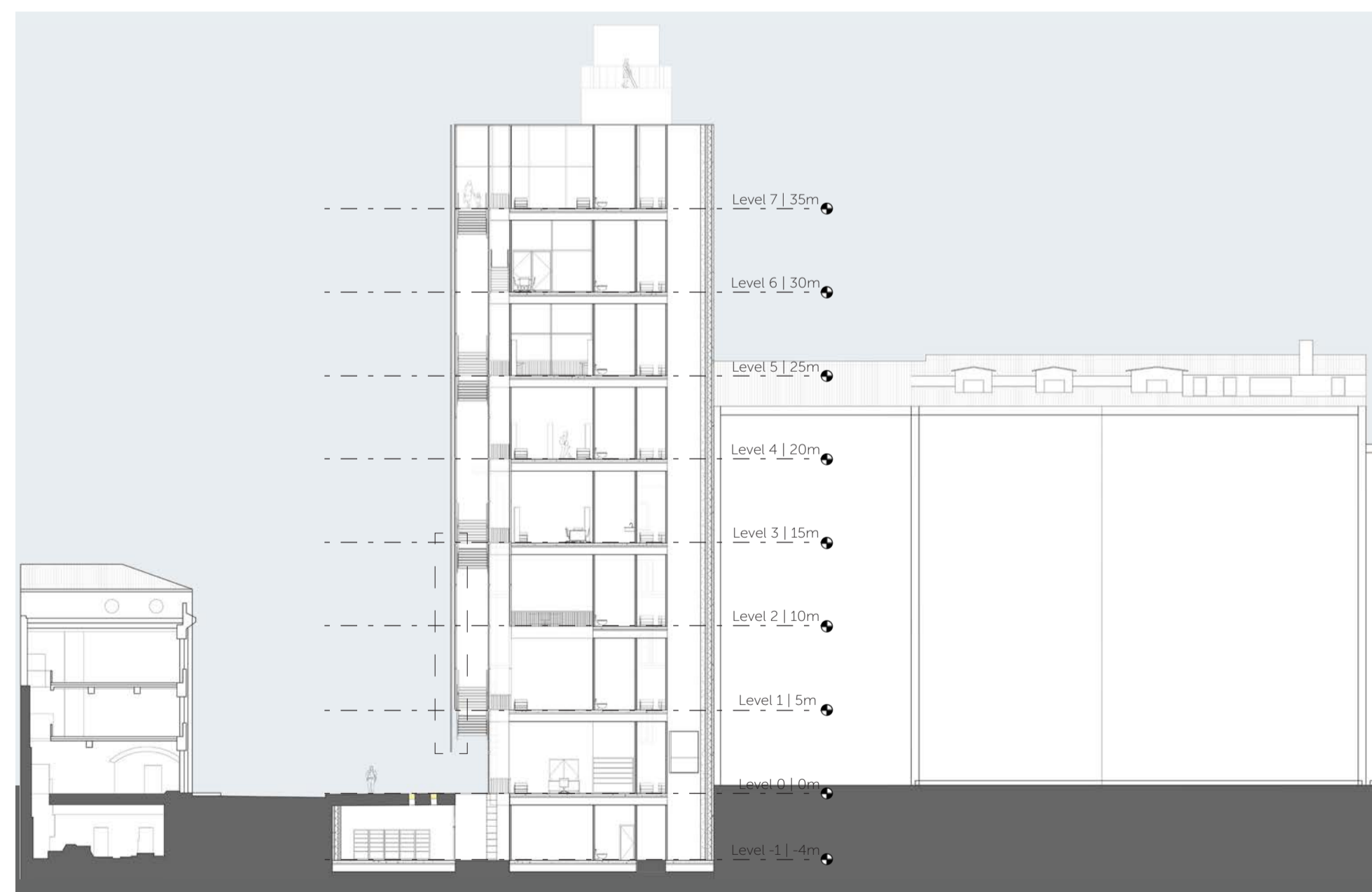
# RENDERINGS



Wall Section



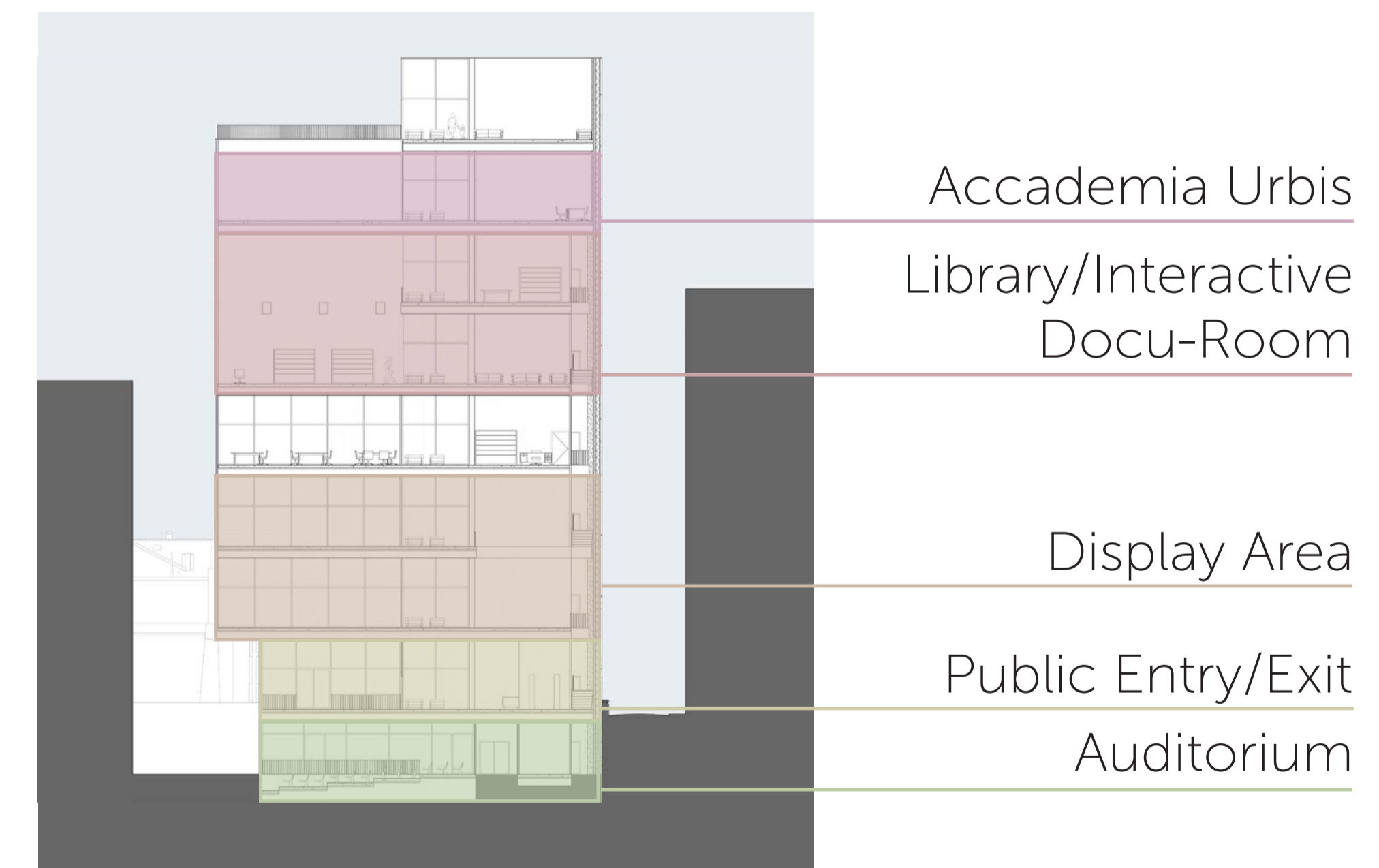
Rendering | View Looking Across Via delle Botteghe Oscure



West Transverse Section



North Elevation



Programmatic Diagram